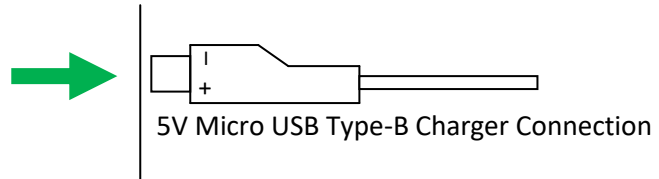


SH88 Frequency Excitation Unit

Introduction

The SH88 Frequency Excitation Unit is a powerful low voltage (5V to 12V) sine and square wave generation unit designed to cleanse the body of a multitude of parasites and bacteria using selected frequencies from 174 Hz to 120,000 Hz. There are four probe connectors for hands and feet plus a volume-adjustable audio output for headphones. Green and Red push buttons at the side turn the unit on and off. The unit has a full colour 7-inch touch-screen display for displaying and controlling all the feature of the device.

SH88 FEU Features



Battery

The SH88 Frequency Excitation Unit is internally powered by a 10,000 mAh 3.7V rechargeable lithium polymer battery and can be recharged via its micro-USB Type-B connector at the side of the unit. The unit comes with a UK mains charger or USB charger cable. When the charger is connected, a fully discharged battery will take about 24 hours for a full charge. When charging the battery, the LED next to the connector will indicate RED. When charging is complete the LED indicates GREEN. If the charger is disconnected or the charger power is turned off, the LED will go off.

When fully charged the battery voltage is approximately 4.20 volts. The charge is considered GOOD when the battery voltage is above 3.70 Volts.

When the unit is turned on, the battery voltage is continuously measured and displayed at the bottom right of the screen.

If the battery voltage drops below 3.70 Volts the charger should be connected.

The Unit can be operated with the mains charger connected. No damage to the unit will result if the charger remains on for several hours after the LED goes GREEN. In normal operation, when the device is turned on and the charger is connected, the LED will always indicate RED (charging). It is not recommended however to permanently charge once the LED goes green if the device is not being used.

It is recommended, when possible, to operate the unit with the charger connected to minimise charging time when it is not being used.

The unit will operate for several hours and many sessions from a fully charged battery without the charger connected.

The unit automatically shuts down before and after a session to save battery power if there is no valid screen touch for 3 minutes.

Display Brightness

At the top right of the display, are two touch controls (BRIGHTER and DARKER) where you can adjust the brightness of the display in steps of 10%. At turn-on the brightness is always set to 30% to minimise battery discharge.

It should be noted that the back light LEDs, which illuminate the display, are **the major source of battery discharge**.

Frequency Group Selections

There are four frequency groups as described in the table below.

Chakra	Special	Parasite Zapper	High Frequency
Crown 936 Hz	(26 Harm) 776.72 Hz	30,000 Hz	120,000 Hz
Third-Eye 852 Hz	(25 Harm) 388.36 Hz	24,000 Hz	110,000 Hz
Throat 741 Hz	(24 Harm) 194.18 Hz	16,000 Hz	100,000 Hz
Heart 639 Hz		10,000 Hz	90,000 Hz
Solar Plexus 528 Hz		7,000 Hz	80,000 Hz
Sacral 417 Hz		4,500 Hz	70,000 Hz
Root 396 Hz		2,500 Hz	60,000 Hz
Extra 285 Hz		1,500 Hz	50,000 Hz
Extra 174 Hz		1,000 Hz	40,000 Hz

The three frequencies in the Special Group are resonant harmonics of the Earth which rotates once every 24 hours or every 86,400 seconds. This relates to a frequency of 0.00001157 Hz. If you double this frequency 24 times, 25 times and 26 times (octaves), you end up with the three frequencies in the table above.

Modes

There are 3 different Modes of Operation:

1. Manual Mode

This mode allows you to manually select any frequency in the frequency group, which will be listed on the left side of the screen. The frequency can be changed manually as many times as desired at any time during a running session.

2. Step-Up Mode

The Step-Up Mode will automatically step up through the 9 frequencies in the selected group starting with the lowest frequency. The time spent for each frequency will be 1/9th of the selected session time. This option is not available for the Special Group.

3. Step Down Mode

The Step-Down Mode will automatically step down through the 9 frequencies in the selected group starting with the highest frequency. The time spent for each frequency will be 1/9th of the selected session time. This option is not available for the Special Group.

Full Works

The Full Works option is a special version of the Step-Up and Step-Down modes. When this option is selected, it will allow you step through all 30 frequencies shown in the frequency table.

1. Full Works Step-Up

This option starts with the lowest frequency in each group and steps up through to the highest frequency in the group. It steps through the groups from left to right and also includes the Special Group. The time spent at each frequency is 1/30th of the selected session time

2. Full Works Step-Down

This option starts with the highest frequency in each group and steps down through to the lowest frequency in the group. It steps through the groups from right to left and also includes the Special Group. The time spent at each frequency is 1/30th of the selected session time

Voltages

There are 8 different operating voltages from 5V to 12V, selectable in increments of 1V. The voltage can be changed at any time before or during a session run by touching Volts Up and Volts Down at the right hand side of the display. It is automatically set to 9V at power-on.

There is no danger of a possible short circuit through the body as the output wires are each internally protected by 140 Ohm resistors to limit the maximum output current.

Session Time

There are 8 selectable session time options, which determine the time from the start to the end of the session. The session time is automatically set to 12 minutes at power-on. The selectable session times are as follows:

3 minutes
6 minutes
9 minutes
12 minutes
18 minutes
24 minutes
30 minutes
45 minutes

The session time can be adjusted up or down at any time prior to starting a session using the Time Up and Time Down touch controls at the right hand side of the display. Once the session has started the session time is fixed and the indicated time counts down to the end of the session.

Sine and Square Waveforms

Sine waveforms are automatically selected for the Chakra and Special groups at turn on or when the RESTART control is touched. Once a session has started you can switch between sine and square waveforms by touching the centre of the graphics display.

Only square waveforms are available for the Parasite Zapper and High Frequency groups.

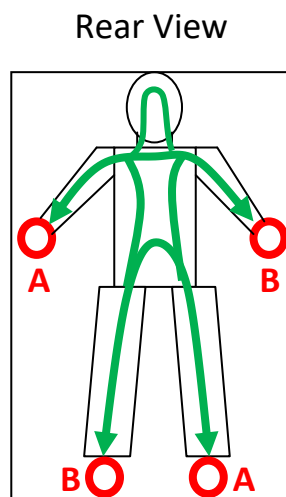
It should be noted that the square waveforms have approximately 3 times the energy of the equivalent sine waveforms. Also higher frequencies have more energy than lower frequencies.

Audio

At the side of the unit are a headphone connector and a potentiometer to adjust the volume of the headphones. The headphone connector transmits pure amplified sinusoidal signals to the headphones and covers all Chakra and Special audio frequencies and the four lower Zapper frequencies up to 4500 Hz. Zapper frequencies are not amplified and the volume reduces as frequency increases.

Probes

There are two RED banana plug sockets on each side of the unit for connecting four RED probe wires. The connectors on the left are for the LEFT HAND (**A** front connector) and LEFT FOOT (**B** rear connector). The connectors on the right side are for the RIGHT HAND (**B** front connector) and RIGHT FOOT (**A** rear connector).



As shown in the diagram above, current alternates between A and B at the selected frequency. The arrangement of probes produces the best overall treatment of the body.

Operating Procedure

To turn on the SH88 Frequency Excitation Unit press the **GREEN** button at the side of the unit. To turn off the unit press the **RED** button.

At turn on the START screen will be displayed.

There is a sensor inside the unit which detects the orientation of the unit (horizontal or vertical) and automatically sets or inverts the display depending on its orientation.

In its vertical position there are three strong magnets under the base which hold the unit securely on the steel base plate, which comes with the unit.

Start Screen

The start screen instructs you to set the required voltage and session time and then choose one of the options below:

	Zapper	
Chakra		High Freq
Full Works		Special

Alternatively you can touch the "Upload" control at the top of the display. This will upload a previously saved configuration (including voltage and session time) and will be ready to start a session using the saved configuration by touching the "GO" control at the top of the display.

Zapper Selection

By touching the “Zapper” option, a new screen will be displayed, which shows all the parasite zapper frequencies on the left hand side with their individual colours.

At the top left of the display, “Restart” will be displayed in case you wish to go back to the Start Screen.

In the centre section of the screen you will be requested to “Choose Your Option” shown below:

Manual Selection	Step Up Frequency
Step Down Frequency	

Zapper “Manual Selection”

On touching the zapper “Manual Selection” option, the centre screen will be cleared and a new instruction: “Choose Frequency” will be displayed.

Also underneath the Restart control will be displayed: “SH88 Zapper Manual Selection”.

A black line will also be drawn between the frequencies 2500 Hz and 4500 Hz. This is to indicate that the graphics time scale for frequencies below the line is different to the graphics time scale for frequencies above the line.

Above the line:	Full scale = 600 μ s	
Below the line:	Full scale = 2 ms	(= 2000 μ s)

You should now touch the Zapper Frequency you wish to use on the left hand side.

Zapper “Manual Frequency Touched”

On touching the selected frequency, the selected Zapper Frequency will be displayed in the upper centre of the screen with a background colour matching the selected frequency.

Underneath the Restart control will be displayed: “SH88 Zapper Manual Selection”.

An instruction “When Ready Touch GO” will be displayed in the centre of the screen. The “GO” control is at the top of the screen.

Before touching “GO” check that the session time and voltage are correct and adjust if necessary. Once “GO” is touched, the session time cannot be changed and it will start to count down.

If you wish to save this configuration for future use, press “SAVE”.

Zapper “Step-Up Frequency”

On touching the zapper “Step-Up Frequency” option, the centre screen will be cleared and the lowest Zapper Frequency (1000 Hz) will be displayed in the upper centre of the screen with a background colour matching the frequency.

Underneath the Restart control will be displayed: “SH88 Zapper Frequency Step Up”.

An instruction “When Ready Touch GO” will be displayed in the centre of the screen. The “GO” control is at the top of the screen.

Before touching “GO” check that the session time and voltage are correct and adjust if necessary. Once “GO” is touched, the session time cannot be changed and it will start to count down.

If you wish to save this configuration for future use, press “SAVE”.

Zapper “Step-Down Frequency”

On touching the zapper “Step-Down Frequency” option, the centre screen will be cleared and the highest Zapper Frequency (30000 Hz) will be displayed in the upper centre of the screen with a background colour matching the frequency.

Underneath the Restart control will be displayed: “SH88 Zapper Frequency Step Down”.

An instruction “When Ready Touch GO” will be displayed in the centre of the screen. The “GO” control is at the top of the screen.

Before touching “GO” check that the session time and voltage are correct and adjust if necessary. Once “GO” is touched, the session time cannot be changed and it will start to count down.

If you wish to save this configuration for future use, press “SAVE”.

Chakra Selection

By touching the “Chakra” option, a new screen will be displayed, which shows all the Chakra frequencies on the left hand side with their individual colours.

At the top left of the display, “Restart” will be displayed in case you wish to go back to the Start Screen.

In the centre section of the screen you will be requested to “Choose Your Option” shown below:

Manual Selection	Step Up Frequency
Step Down Frequency	

Chakra “Manual Selection”

On touching the Chakra “Manual Selection” option, the centre screen will be cleared and a new instruction: “Choose Frequency” will be displayed.

Underneath the Restart control will be displayed: “SH88 Chakra Manual Selection”.

You should now touch the Chakra Frequency you wish to use on the left hand side.

Chakra “Manual Frequency Touched”

On touching the selected frequency, the selected Chakra Frequency will be displayed in the upper centre of the screen with a background colour matching the selected frequency.

An instruction “When Ready Touch GO” will be displayed in the centre of the screen. The “GO” control is at the top of the screen.

Before touching “GO” check that the session time and voltage are correct and adjust if necessary. Once “GO” is touched, the session time cannot be changed and it will start to count down.

If you wish to save this configuration for future use, press “SAVE”.

Chakra “Step-Up Frequency”

On touching the Chakra “Step-Up Frequency” option, the centre screen will be cleared and the lowest Chakra Frequency (Extra Frequency 174 Hz) will be displayed in the upper centre of the screen with a background colour matching the frequency.

Underneath the Restart control will be displayed: “SH88 Chakra Frequency Step Up”.

An instruction “When Ready Touch GO” will be displayed in the centre of the screen. The “GO” control is at the top of the screen.

Before touching “GO” check that the session time and voltage are correct and adjust if necessary. Once “GO” is touched, the session time cannot be changed and it will start to count down.

If you wish to save this configuration for future use, press “SAVE”.

Chakra “Step-Down Frequency”

On touching the Chakra “Step-Down Frequency” option, the centre screen will be cleared and the highest Chakra Frequency (Crown Frequency 936 Hz) will be displayed in the upper centre of the screen with a background colour matching the frequency.

Underneath the Restart control will be displayed: “SH88 Chakra Frequency Step Down”.

An instruction “When Ready Touch GO” will be displayed in the centre of the screen. The “GO” control is at the top of the screen.

Before touching “GO” check that the session time and voltage are correct and adjust if necessary. Once “GO” is touched, the session time cannot be changed and it will start to count down.

If you wish to save this configuration for future use, press “SAVE”.

High Frequency Selection

By touching the “High Freq” option, a new screen will be displayed, which shows all the High Frequencies on the left hand side with their individual colours.

At the top left of the display, “Restart” will be displayed in case you wish to go back to the Start Screen.

In the centre section of the screen you will be requested to “Choose Your Option” shown below:

Manual Selection	Step Up Frequency
Step Down Frequency	

High Frequency “Manual Selection”

On touching the High Frequency “Manual Selection” option, the centre screen will be cleared and a new instruction: “Choose Frequency” will be displayed.

Underneath the Restart control will be displayed: “SH88 High Frequency Manual Selection”.

You should now touch the High Frequency you wish to use on the left hand side.

High Frequency “Manual Frequency Touched”

On touching the selected frequency, the selected High Frequency will be displayed in the upper centre of the screen with a background colour matching the selected frequency.

An instruction “When Ready Touch GO” will be displayed in the centre of the screen. The “GO” control is at the top of the screen.

Before touching “GO” check that the session time and voltage are correct and adjust if necessary. Once “GO” is touched, the session time cannot be changed and it will start to count down.

If you wish to save this configuration for future use, press “SAVE”.

High Frequency “Step-Up Frequency”

On touching the High Frequency “Step-Up Frequency” option, the centre screen will be cleared and the lowest High Frequency (High Frequency 40000 Hz) will be displayed in the upper centre of the screen with a background colour matching the frequency.

Underneath the Restart control will be displayed: “SH88 High Frequency – Frequency Step Up”.

An instruction “When Ready Touch GO” will be displayed in the centre of the screen. The “GO” control is at the top of the screen.

Before touching “GO” check that the session time and voltage are correct and adjust if necessary. Once “GO” is touched, the session time cannot be changed and it will start to count down.

If you wish to save this configuration for future use, press “SAVE”.

High Frequency “Step-Down Frequency”

On touching the High Frequency “Step-Down Frequency” option, the centre screen will be cleared and the highest High Frequency (High Frequency 120000 Hz) will be displayed in the upper centre of the screen with a background colour matching the frequency.

Underneath the Restart control is displayed: “SH88 High Frequency – Frequency Step Down”.

An instruction “When Ready Touch GO” will be displayed in the centre of the screen. The “GO” control is at the top of the screen.

Before touching “GO” check that the session time and voltage are correct and adjust if necessary. Once “GO” is touched, the session time cannot be changed and it will start to count down.

If you wish to save this configuration for future use, press “SAVE”.

Special Selection

By touching the “Special” option, a new screen will be displayed, which shows the three Earth Harmonics Frequencies (24th, 25th and 26th harmonics) on the left hand side with their individual colours. And frequencies

At the top left of the display, “Restart” will be displayed in case you wish to go back to the Start Screen.

In the centre section of the screen you will be requested to “Choose Your Option” shown below:

Manual
Selection

There are no step options for the Special Group.

Special “Manual Selection”

On touching the Special “Manual Selection” option, the centre screen will be cleared and a new instruction: “Choose Frequency” will be displayed.

Underneath the Restart control will be displayed: “SH88 Earth Harmonic Manual Selection”. Also lower down on the left is a description of the Earth Harmonic Frequencies.

You should now touch the Special Frequency you wish to use on the left hand side.

Special “Manual Frequency Touched”

On touching the selected frequency, the selected Special Frequency will be displayed in the upper centre of the screen with a background colour matching the selected frequency.

An instruction “When Ready Touch GO” will be displayed in the centre of the screen. The “GO” control is at the top of the screen.

Before touching “GO” check that the session time and voltage are correct and adjust if necessary. Once “GO” is touched, the session time cannot be changed and it will start to count down.

If you wish to save this configuration for future use, press “SAVE”.

GO, the Graphics, Power and Energy

On touching the “GO” control the programmed frequency will be displayed in real time on a blue graphics area in the centre of the screen. The signals displayed are the A and B signals on the probes. Also displayed are four fine horizontal lines indicating the internal 0V level and the internal selected voltage for the A and B probes.

It should be noted that the A signal and B signal are always of opposite polarity so as the signals change with frequency the direction of current flowing through the probes and the body will be continually reversed.

At the same time the remaining session time will count down and be indicated at the right side of the screen.

When holding the probes with two hands, two feet or all four as shown in the diagram on Page 4 current will pass through the body via skin capacitance and body resistance. As more current passes through the body the voltage signals shown in the graphics will reduce in amplitude. The power asserted by the probes on the body at any instant is the product of the voltage on the probes and the current through the body. This power is continually computed by the SH88 unit and is displayed numerically and graphically at the bottom of the screen.

Also just below the power display is the integration of power with time, which is energy or work done on the body. This energy continuously increases with time and is indicated numerically and graphically on the screen.

In order to make the best use of the energy graphics the full scale value of the energy graphics line is made dependent on the programmed session time. This way the graphic line increases faster with shorter session times, but the indicated digital energy is the correct value.

The power is dependent on both frequency and voltage and increases with the square of the voltage. So the power with 12V (square 144) is 5.7 times the power with 5V (square 25). This is assuming that resistance and capacitance of the body are the same for both voltages (which might not be the case). Only the lower frequencies have noticeably low power. At higher frequencies there is little observed difference between them in power.

Pause and Continue

Once “GO” has been touched and a session has started, the touch control changes from “GO” to “Pause”.

If for some reason, a session has to be temporally stopped, you can touch “Pause” and then the graphics and signals will stop and “Continue” will replace the “Pause” touch indication. When you return just touch “Continue” and the session will continue from where it was stopped.

It should be noted that if the session is paused, a time limit of 3 minutes is set. If the 3 minutes expire then the unit will shut down and all information of the session will be lost.

Recommended Voltage Settings

The recommended age group voltage settings are as follows:

Age Group	Hands Only	Feet Only	Hands and Feet
Child Age 8-9	5 Volts	5 Volts	6 Volts
Child Age 10-11	6 Volts	6 Volts	7 Volts
Child Age 12-13	7 Volts	8 Volts	9 Volts
Adult Female	8-9 Volts	9-10 Volts	10-11 Volts
Adult Male	9-11 Volts	10-12 Volts	11-12 Volts

Caution

You should not use this device if

- You wear a pacemaker
- You suffer from epilepsy
- You are a child under 8 years
- You are pregnant
- You are trying to conceive

BEC Navigation Limited

www.becnav.co.uk